



Mountain Crane Service

Any Crane. Any Job. Utah's Largest Crane Fleet

www.mountaincrane.com

(801) 282-3330 or (866) 686-3330

November 2009



Inside this Issue:

- Best of 2009 Award
- Head Engineer joins Mountain Crane Team
- Utah's Largest Crane Fleet
- Project Walkthroughs



Enter to Win

Join Mountain Crane to cheer on our Utah Jazz from the **FRONT ROW!**

[Enter to win 4 Front Row tickets](#) to an upcoming Jazz game.

Includes free parking and VIP dinner before the game.

Best of 2009: Alky Turnaround

Intermountain Contractor Magazine's Best of 2009 Awards are given to honor the building teams that have completed the best projects of 2009 in the Intermountain West. Each project nomination is reviewed by a panel of local industry professionals. The 13 categories cover a variety of project types, including commercial, highway, green, healthcare, and education.

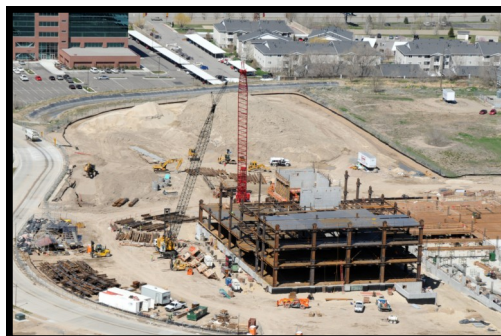


Mountain Crane is thrilled to have been awarded Best of 2009 Project Management for correlation with Chevron Refinery and TIMEC for the Alky Turnaround project completed this spring. This award recognizes Mountain Crane for superior teamwork, safety (including man-hours worked, recordable incidents, on-site safety staff, and procedures in place), contribution to

the community or industry, and overcoming unique or difficult challenges.

Mountain Crane would also like to extend our congratulations to Big-D Construction, Okland Construction, Layton Construction, Alder Construction, Ascent Construction, Ames Construction, Geneva Rock, and Jacobsen Construction for their Best of 2009 Awards in the various categories.

Any Crane—Any Job



Let us quote your next project. Services available 24/7.

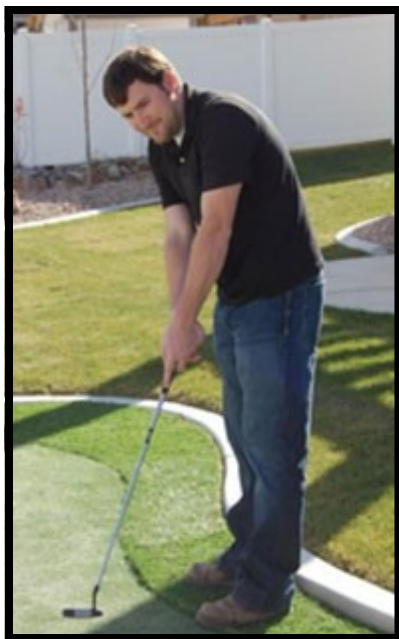
Main Office (801) 282-3330

Josh Martin (801) 803-4249

Skyler Mundy (801) 520-0587

Lon Stam (801) 809-6159

Head Engineer Joins Mountain Crane Team



Jared Belcher joins the Mountain Crane team as Head Engineer. Jared brings experience in both heavy and highway construction, integrity, and a strong work ethic.

Jared provides pertinent information for current and future job sites. He plays a significant role in Mountain Crane's ongoing efforts to promote safety and efficiency in the workplace. This is especially true with heavy-lift equipment such as Mountain Crane's larger crawler cranes.

By providing critical lift plans, including data on lifting capacity and ground bearing pressures, Jared ensures that all necessary site preparations are communicated to the customer before the crane arrives. Where required, lift plans can be submitted for customer approval well before any work is to take place.

Jared also provides measurements for clearances, etc. in his various project drawings. He, just like any of our sales team, is available for project walk-throughs or to discuss any upcoming projects you may be looking at.

Jared can be contacted via e-mail at jared@mountaincrane.com or on his cell (801) 300-0520.

Engineering Staff

One of Mountain Crane's biggest assets is our in-house engineering staff. Engineers create and implement both minor and critical lift plans.

Through ongoing communication with other project engineers, superintendents, project managers, and safety personnel, Mountain Crane's staff are able to produce quality AutoCAD drawings and lift plans.

Mountain Crane has the ability to research ground bearing pressures, lifting capacities, working restrictions, and many other aspects of crane operation and present these items in a format that is easily understood and

shared with others involved in the project planning process.

Mountain Crane Service can produce quality AutoCAD drawings and lift plans to customer's specifications.

Additional information can be collected and included in each lift plan as desired.

Contact our office at (801) 282-3330 for more information.

Project Walkthroughs

Mountain Crane Service is willing to walk through any upcoming job you may be bidding. We can also look over plans in your office.

Crane type and placement on site can be a key factor in the estimating process. We can provide suggestions that will save you TIME and

MONEY in the long run.

Crane operators are also available to walk through a site before your project takes place.





Utah's Largest Crane Fleet

Load charts for each of our cranes are available online at www.mountaincrane.com/fleet.



Mountain Crane Service provides a variety of services across the Intermountain West including plant shutdowns, steel, pre-cast panels, heating and cooling units, transformers, pools and hot tubs, demolition, mobile homes, windmills, and bridge girders, to name a few.

Mountain Crane Service employees receive continual training through Operating Engineers Local 3 and have their CCO Certification. We have a clean OSHA record and take pride in our safety record.

Check out our website at www.mountaincrane.com for more information.

Crane Safety Training

Mountain Crane Service is continually striving to improve crane safety awareness and procedures. To schedule crane safety training or on-site demonstration for your organization, please contact us at (801) 282-3330. We would be happy to provide training materials for your company.

