



# Mountain Crane Service

Reaching Higher—Safety. Integrity. Excellence.

www.mountaincrane.com

(801) 282-3330 or (866) 686-3330

October 2010



## Mountain View Corridor

Mountain Crane Service has been working with Copper Hills Constructors and Kiewit on the new Mountain View Corridor project. This bridge pictured below utilized our Grove GMK5275 275 Ton all terrain crane. As you can tell from the pictures it was a beautiful day to be working outdoors.

For more information on the Mountain View Corridor project check out:

<http://udot.utah.gov/mountainview/>



*Pictures courtesy of Kiewit*



### Inside this Issue:

- Mountain View Corridor
- Safety First
- National Geographic
- Employee Spotlight
- Safety Barbeque



## Enter to Win

[Enter to win](#) 2 TICKETS to join us in the Mountain Crane Suite for a game of your choice. E-mail [marie@mountaincrane.com](mailto:marie@mountaincrane.com)



## Safety First

Rich Hunt was recently recognized by the Wyoming/Montana Safety Council for safety and project management. He was recommended for this award by several customers. Rich has spent much of his summer managing turnaround projects at various plants and refineries.



Rich is an excellent Project Manager and an asset to any project. He has experience with all types of cranes and is a great personnel manager. He was recognized among his peers at a banquet in mid-October.

# National Geographic

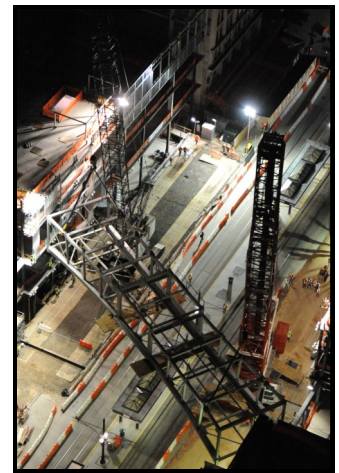
If you missed the episode featuring Mountain Crane Service and the City Creek Sky Bridge, here is the link:

<http://channel.nationalgeographic.com/series/worlds-toughest-fixes/5037/Photos#tab-Overview>

Mountain Crane Service has copies on DVD available if you would like to see the whole story. Please contact Marianne at [Marianne@mountaincrane.com](mailto:Marianne@mountaincrane.com) if you would like to receive a copy by mail.

If you would like to know more about this project please check out our March newsletter that can be found here:

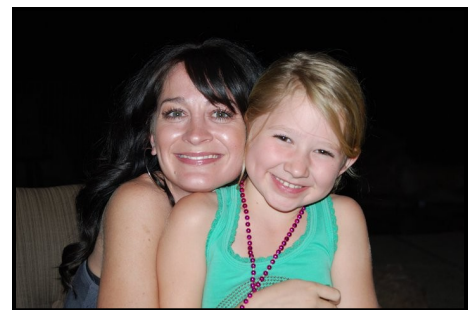
<http://mountaincrane.com/pdfs/mtncranenewsletter-032010.pdf>



## Employee Spotlight

**Nicole Hudson** joined the Mountain Crane team in May of 2010. She works as **Maintenance Secretary** and tries very hard to keep our mechanics organized. She oversees the equipment maintenance database and dispatches assignments as repairs are requested.

In her spare time, Nicole enjoys yoga and spending time with her two kids. She has a seven-year-old daughter and a three-year-old son.





## *Utah's Largest Crane Fleet*

Load charts for each of our cranes are available online at [www.mountaincrane.com/fleet](http://www.mountaincrane.com/fleet).



*Mountain Crane Service provides a variety of services across the Intermountain West including plant shutdowns, steel, pre-cast panels, heating and cooling units, transformers, pools and hot tubs, demolition, windmills, and bridge girders, to name a few.*

*Heavy Haul service is also available.*

*Mountain Crane Service employees receive continual training through Operating Engineers Local 3 and have their CCO Certification.*

*Check out our website at [www.mountaincrane.com](http://www.mountaincrane.com) for more information.*

# Safety Barbeque

Before beginning their Halloween festivities, Mountain Crane Service employees met for a quarterly safety barbeque. Presenters were selected from Operations and Office staff. Topics included PPE, Bills of Lading, Driver's log books, IFTA fuel logs, and equipment maintenance. The new employee safety incentive program was also introduced, a system which rewards employees for each one hundred hours completed without accident or incident. Each employee was given a safety punch card that can be redeemed for quarterly prizes.

Employees were also recognized for their efforts to complete paperwork and be proactive in meeting customer's needs.

To conclude the meeting, employees were treated to a full scale barbeque and given pumpkins filled with candy to share with their families.

Mountain Crane continues to focus on safety both on and off the job. For more information on our quarterly safety meetings contact Gary Rehmer at [gary@mountaincrane.com](mailto:gary@mountaincrane.com).

