



Mountain Crane Service

Reaching Higher—Safety. Integrity. Excellence.

www.mountaincrane.com

(801) 282-3330 or (866) 686-3330

July 2011



Brigham City Temple



Mountain Crane Services was privileged to work on the LDS Brigham City Temple construction project. Our LinkBelt LS348 300 ton crawler crane was used to hang exterior concrete wall panels starting in mid-May. The panels are a brilliant white due to the combination of limestone aggregate and white cement.

The east spire was set in place on June 10. This spire weighs 75,000 lbs. and was constructed on site from five panels before it was lifted to its final resting place on the tower. The west spire was hung later that month.



Inside this Issue:

- Brigham City Temple
- Channel 2 Ron on the Run
- Photo Contest Sneak Peak
- Employee Spotlight
- Giveaway: Red Ledges Golf

The statue of Angel Moroni was set into place on July 12. This required use of two all-terrain cranes, one for the statue and one for the personnel basket for the workers setting the statue in place.



Construction is expected to finish in 2012. For more information on this project, see the website for The Church of Jesus Christ of Latter-Day Saint [here](#).



Enter to Win

[Enter to win](#) a Golf Giveaway from Mountain Crane.



Pictures taken by Forever Shots Photography.



Channel 2 Ron on the Run

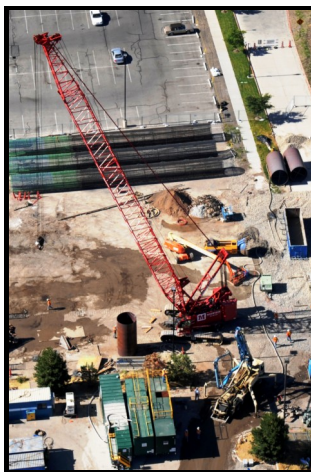


Channel 2 News reporter Ron Bird caught one of our cranes on video during a “Ron on the Run” segment. Check out his report on the Salt Lake City County Building restoration [here](#).

This project featured our Grove GMK5275 all terrain crane for work under Jacobsen Construction.

Photo Contest Sneak Peak

Mountain Crane Service is excited to announce the winners of our photo contest that has been open for the last several months in the August newsletter.



This is a sample of some of the great images that have been sent in for the contest. Thank you for your support and participation!



Employee Spotlight

Andrea Allen is a new addition to the Mountain Crane team. She has taken over the role of **Dispatch Secretary**.

Although free time is hard to come by when tackling the complexities of dispatch during busy season, Andrea enjoys anything outdoors. She frequently enters dog shows and goes horseback riding.





Utah's Largest Crane Fleet

Load charts for each of our cranes are available online at www.mountaincrane.com/fleet.



Mountain Crane Service provides a variety of services across the Intermountain West including plant shutdowns, steel, pre-cast panels, heating and cooling units, transformers, pools and hot tubs, demolition, windmills, and bridge girders, to name a few.

Heavy Haul service is also available.

Mountain Crane Service employees receive continual training through Operating Engineers Local 3 and have their CCO Certification.

Check out our website at www.mountaincrane.com for more information.

Golf Giveaway Round 2

Due to the high interest and excitement of this event, Mountain Crane is pleased to announce another chance to win our Red Ledges Golf Giveaway!

Mountain Crane Service offers an afternoon of golf at Red Ledges Golf Course for 2 players. Red Ledges is a private, award-winning course designed by Jack Nicklaus in Heber City, UT.

Most recently, Red Ledges won Utah's Best of State 2011.

The giveaway winner will be able to bring a guest to golf with 2 team members from Mountain Crane Service on a date of their choosing.

[Click here to enter to win](#). Winners for both June and July will be announced in our August newsletter.

