



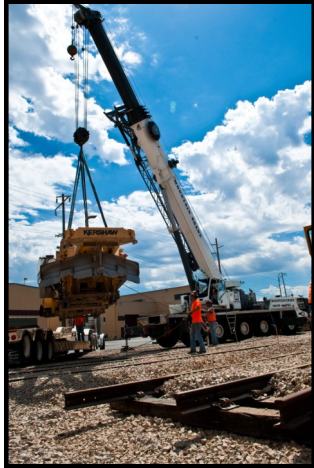
Mountain Crane Service

Reaching Higher—Safety. Integrity. Excellence.

www.mountaincrane.com

(801) 282-3330 or (866) 686-3330

June 2011



Inside this Issue:

- Elko Mining Expo
- ACT 100 Listing
- Touch-A-Truck
- Photo Contest: Final Call
- Employee Spotlight
- Golf Giveaway Round 2



Enter to Win

[Enter to win](#) a
Golf Giveaway from
Mountain Crane.



Elko Mining Expo



Mountain Crane Service was excited to participate in this year's Elko Mining Expo. We set up an outdoor booth and displayed our Liebherr LTM1165 200 Ton All Terrain Crane.

Mountain Crane Service is **Browz certified** and has an excellent safety record. For more information or to get a quote for an upcoming project, feel free to contact any of us listed below.

We look forward to working with you.

Josh Martin (801) 803-4249

Skyler Mundy (801) 520-0587

Paul Belcher (801) 688-3250

Lon Stam (801) 809-6159

ACT 100 Listing

Mountain Crane Service has been listed #37 by American Cranes & Transport Magazine's 2011 ACT 100 Index. This index ranks the largest crane companies in North America. For a complete listing, you can access the ACT magazine website [here](#).

Mountain Crane has been consistently ranked in the top 50 for the past 3 years.



Touch-A-Truck



Mountain Crane Service enjoys the opportunity to participate in community events. Last year, we were invited to display a crane in Fort Herriman Days' Touch-A-Truck. The event was a success and we were asked to return again this year. This event was held Friday, June 10.

During this event, kids can walk around to the various pieces of equipment, look inside the operators' cab, and talk to the operators standing by.

As you can tell from the pictures, this event is a big hit!

Photo Contest: Final Call

This is the final call for Mountain Crane's photo contest. We encourage customers to send in pictures of our cranes at your projects. Thank you to those who have already submitted!

There will be 3 winners chosen who will each win a **\$100 VISA card**. The winners will be announced in our August newsletter. We invite as many as are interested to participate and look forward to your entries.

Guidelines:

Please do not send cell phone images

We prefer photos without a date stamp in bottom corner

Both current and previous jobs will be considered

You are welcome to submit multiple entries (No Limit)

Submit photos to info@mountaincrane.com

By submitting photos, you agree to let Mountain Crane use these images in future marketing materials



Employee Spotlight



Doug Steinfeldt is a talented **Crane Operator**. He can often be found operating our LinkBelt LS348 300 Ton Crawler Crane.

Doug has been with Mountain Crane Service from the very beginning. His skills with pre-cast tilt ups and critical lifts are a great asset to Mountain Crane and the other team members he works with.

Doug is one of the operators recognized for the SC&RA Operator Safety Award.

When off the clock, Doug enjoys spending time with his wife, kids, and grandkids.



Utah's Largest Crane Fleet

Load charts for each of our cranes are available online at www.mountaincrane.com/fleet.



Mountain Crane Service provides a variety of services across the Intermountain West including plant shutdowns, steel, pre-cast panels, heating and cooling units, transformers, pools and hot tubs, demolition, windmills, and bridge girders, to name a few.

Heavy Haul service is also available.

Mountain Crane Service employees receive continual training through Operating Engineers Local 3 and have their CCO Certification.

Check out our website at www.mountaincrane.com for more information.

Golf Giveaway Round 2

Due to the high interest and excitement of this event, Mountain Crane is pleased to announce another chance to win our Red Ledges Golf Giveaway!

Mountain Crane Service offers an afternoon of golf at Red Ledges Golf Course for 2 players. Red Ledges is a private, award-winning course designed by Jack Nicklaus in Heber City, UT.

Most recently, Red Ledges won Utah's Best of State 2011.

The giveaway winner will be able to bring a guest to golf with 2 team members from Mountain Crane Service on a date of their choosing.

[Click here to enter to win.](#) Winners for both June and July will be announced in our September newsletter.

