



# Mountain Crane Service

Reaching Higher—Safety. Integrity. Excellence.

www.mountaincrane.com

(801) 282-3330 or (866) 686-3330

April 2011



## SC&RA 2011 Crane Operator Safety Award

Mountain Crane Service operators Roy Justice, Craig Lever, Mike Rose, and Rick Hull were recently recognized by the SC&RA Crane & Rigging Group for having **10,000 consecutive hours with no accidents or incidents.** This impressive award is given to operators with outstanding safety records. Additional criteria for the award included safety certifications, years' experience, and crane knowledge. Mountain Crane is proud to have our operators recognized for their achievements and dedication to their work.

Featured below are some of the projects that these crane operators have been involved in, as well as some of their signature cranes.

### Inside this Issue:

- SC&RA 2011 Award
- Junior Crane Operators
- Platinum Safety Award
- Photo Contest
- Employee Spotlight
- Gift Card Winners
- Manitowoc 18000 Model Crane

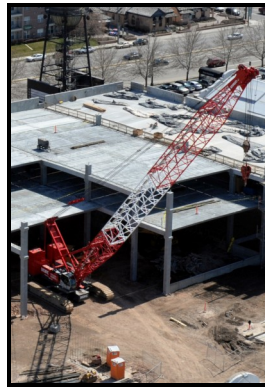


## Enter to Win

[Enter to win](#) a Manitowoc Model Crane! Check out pg. 3 for more information



*Roy Justice*  
*Liebherr LTM 1400*



*Mike Rose*  
*Kobelco 7250*



*Rick Hull*  
*Grove GMK 5165*

## Junior Crane Operators

We thought you might enjoy some photos of the younger generation ready to come to work. After all, Mountain Crane is a family Company.



## Platinum Safety Award

Mountain Crane Service has been awarded a Platinum-level safety award from the Associated General Contractors of Utah. The Platinum award, the highest level given by the AGC, honors construction firms who are 25% below the combined averages of the OSHA Total Recordable and Lost Time Incidence Rates, and the average (1.0) EMR.

This award was presented at a luncheon to Lon Stam and Gary Rehmer on Wednesday April 27. Other companies recognized for safety included Jacobsen Construction, Oakland Construction, among many others.



Mountain Crane Service is pleased to be a member of the AGC and looks forward to another excellent year in 2011.

## Photo Contest

Mountain Crane is having a photo contest through June 30. We encourage customers to send in pictures of our cranes at your projects.

There will be 3 winners chosen who will each win a **\$100 VISA card**. The winners will be announced in the following July newsletter. We invite as many as are interested to participate and look forward to your entries.

### Guidelines:

Please do not send cell phone images

We prefer photos without a date stamp in bottom corner

Both current and previous jobs will be considered

You are welcome to submit multiple entries (No Limit)

Submit photos to [info@mountaincrane.com](mailto:info@mountaincrane.com)

By submitting photos, you agree to let Mountain Crane use these images in future marketing materials



## Employee Spotlight



**Roy Justice** is a talented **Crane Operator**. He can be found operating our Liebherr LTM1400, which he has nicknamed "Optimus Prime." If you look closely at the photo you can see Roy displaying his crane, decals and all. Roy is one of the operators recognized for the SC&RA Operator Safety Award.

When off the clock, Roy enjoys embracing his inner cowboy and working on his brother's ranch.

Roy also enjoys camping and spending time with his family.

## Cabela Gift Card Winners



Mountain Crane Service is pleased to award Cabela's Gift Cards to...

**Jeff Krein** with TIMEC and **Ron Charmasson** with PCL Industrial!

Josh and/or Skyler will deliver your prizes shortly. See the next page for details on our next big giveaway. Gift card entries will resume later this year.



### Utah's Largest Crane Fleet

Load charts for each of our cranes are available online at [www.mountaincrane.com/fleet](http://www.mountaincrane.com/fleet).



Mountain Crane Service provides a variety of services across the Intermountain West including plant shutdowns, steel, pre-cast panels, heating and cooling units, transformers, pools and hot tubs, demolition, windmills, and bridge girders, to name a few.

Heavy Haul service is also available.

Mountain Crane Service employees receive continual training through Operating Engineers Local 3 and have their CCO Certification.

Check out our website at [www.mountaincrane.com](http://www.mountaincrane.com) for more information.

## Manitowoc 18000 Crane Model



This month's [enter to win](#) drawing is for a model Manitowoc 18000 Crawler Crane. This crane is ready to be assembled. One of our sales representatives will be happy to help you set this crane up for proud display in your office.

The Manitowoc 18000 Crane Model is a rare collector's item. This crane is extremely detailed at a scale of 1:50. It is also fully operational and claims that it is even capable of lifting a folding chair.

