



Mountain Crane Service

Reaching Higher—Safety. Integrity. Excellence.

www.mountaincrane.com

(801) 282-3330 or (866) 686-3330

April 2010



Super 16000 Wind Attachment

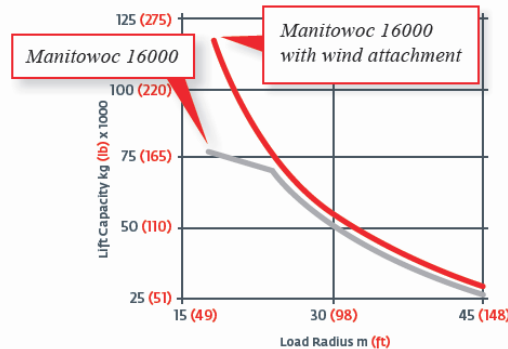
Mountain Crane Service is excited to announce its newest equipment addition: a **Manitowoc 16000 Heavy Wind Attachment**. This attachment utilizes existing hardware and fits any Manitowoc 16000.

The attachment will be available for rent beginning **June 2010**. Contact Mountain Crane at (801) 282-3330 for a quote on your next project.



ANSI B30.5

Load chart comparison — 16000 WA vs 16000
(292 ft + EUBP boom, 360 degrees)



This attachment enables the Manitowoc 16000 to install 2.5 MW (and comparable) wind turbines on towers between 80m and 85m.

For more technical information, check out [Manitowoc's News Release](#).

Inside this Issue:

- Super 16000
- NSA Data Center
- BAUMA 2010
- Liebherr Factory Tour
- Top 20 Under 40
- Crane Safety Booklets Available



Enter to Win

[Enter to win](#) a \$50 **Cabela's Gift Card** from Mountain Crane. E-mail marie@mountaincrane.com



NSA Data Center—Project Planning

Congratulations to each of the teams that have been short-listed for the upcoming NSA Data Center at Camp Williams! Mountain Crane Service is very interested in participating and has a staff of experienced employees ready to help in any phase of the planning process.

Please contact the following for more information:

Lon Stam—Project Planning/Equipment Selection
 Josh Martin/Skyler Mundy—Estimating
 Marie Neff—Subcontract Pre-Qualification & Insurance
 Jared Belcher—Engineer/Lift Planning

Bauma 2010

Owners of Mountain Crane Service attempted a trip to Munich, Germany for BAUMA 2010. Unfortunately, due to multiple delays caused by the Icelandic volcano eruption, time spent at the crane show was very limited. The crew was re-routed through Rome, Italy and left to drive approx. 600 miles to their destination.

Waiting patiently in Rome



BAUMA Crane Exhibit

*Vern Belcher,
Dave Belcher, Lon Stam*



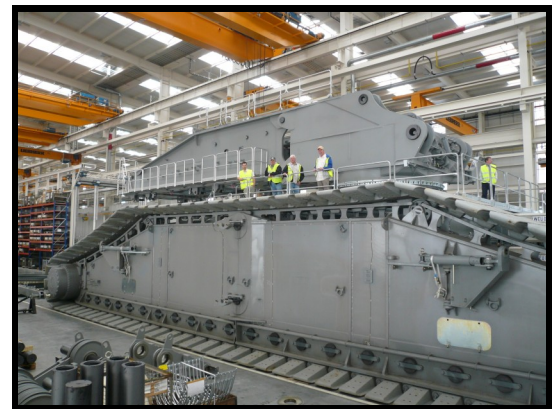
*Eyjafjallajokull volcano 4/18/10.
Photo courtesy of Wikipedia.*



Liebherr Factory Tour

The Mountain Crane guys were able to tour Liebherr's crane factory while in Germany for BAUMA 2010. Liebherr was a very gracious host and arranged for transportation to and from the Munich show.

Mountain Crane was excited to see the facility, having toured Manitowoc & LinkBelt factories previously. The highlight of their trip was the new LR13000, the largest crane in production. The tracks are over 20m long and weigh 210 metric tons each. The crane will be available 2011 with a capacity over 3,000 metric tons (3,300 U.S. ton). The crane's house was on display at BAUMA and featured in [Crane's Today Magazine](#).



Paul Belcher of Mountain Crane Service was recently awarded "Top 20 Under 40" by *Intermountain Contractor* magazine. This program is designed to recognize top industry professionals who have worked hard and excelled in their respective fields before reaching the age of 40.

Paul is a co-owner of Mountain Crane Service and graduate of both USU's MBA program and Thunderbird's Master's of Interna-

Top 20 Under 40

tional Management program. He considers it a privilege to work with his dad, Lon, and Uncle Vern.

The past six years of company ownership has been an adventure and he looks forward to many more years working with his friends and family.



Utah's Largest Crane Fleet

Load charts for each of our cranes are available online at www.mountaincrane.com/fleet.



Mountain Crane Service provides a variety of services across the Intermountain West including plant shutdowns, steel, pre-cast panels, heating and cooling units, transformers, pools and hot tubs, demolition, mobile homes, windmills, and bridge girders, to name a few.

Mountain Crane Service employees receive continual training through Operating Engineers Local 3 and have their CCO Certification. We have a clean OSHA record and take pride in our safety record.

Check out our website at www.mountaincrane.com for more information.

Crane Safety Booklets Available

Mountain Crane Service has produced an excellent crane safety handout. If you would like a copy to review, please call us at (801) 282-3330. We would be happy to drop a few off at your office and discuss any other ways in which our company can help you meet your safety goals.

Crane Safety Training

Mountain Crane Service is continually striving to improve crane safety awareness and procedures. To schedule crane safety training or on-site demonstration for your organization, please contact us at (801) 282-3330. We would be happy to provide training materials for your company.

